



"Since 1994, Bottomline Technologies has worked as a partner with us as we migrated our electronic access channel through four generations of technology, from DOS to Windows® to the Web. Bottomline's WebSeries enables RBC to readily integrate other bank Web applications into our Viewfinder Web portal, making it straightforward for us to broaden our services to our clients every year – a real competitive advantage."

David Barkley
Royal Bank of Canada
Global Services Director
Strategic Business Technology



WebSeries® Client Access Gateway

Secure, Unattended Transaction and Data Communication Infrastructure

Today's corporate clients want seamless communication of transactions and data to and from their back-office systems, as well as the ability to print daily statement reports quickly and easily. Installed workstation products that once provided this functionality have been increasingly replaced by browser-based offerings that require human intervention to initiate file downloads, report printing and file uploads. Available high-end file transfer alternatives to this are expensive, difficult to support, and subsequently can only be deployed to your largest corporate clients – leaving many smaller clients without a solution.

Unlike these alternatives, the WebSeries Client Access Gateway creates the highest standard of transactional communication for secure, unattended transmission of payments, check issuance files, securities confirmations and information reporting files with very low infrastructure cost. The Gateway enables clients of all sizes to send payments and data directly from back-office systems to their banks and receive daily reports without manual intervention.

Win and Retain New Clients with Superior Transactional Services

Although straight through processing projects with large, lucrative clients generate important revenue, they also can come with hefty license, service and maintenance costs. Smaller corporations, interested in having the same automation capabilities, are rarely willing to pay the price. Without large-scale buying power, these smaller bank clients are forced to use browser based, manual processes laden with risk and software license fees.

WebSeries Client Access Gateway dramatically improves your ability to service and retain smaller corporate clients, as well as gain large corporate clients tied to transactional services. Because WebSeries Client Access Gateway eliminates "host to host" workstations and various software licenses associated with traditional methods, banks can offer automated transmission and reporting services to the broadest set of clients more profitability and at the lowest cost of ownership.

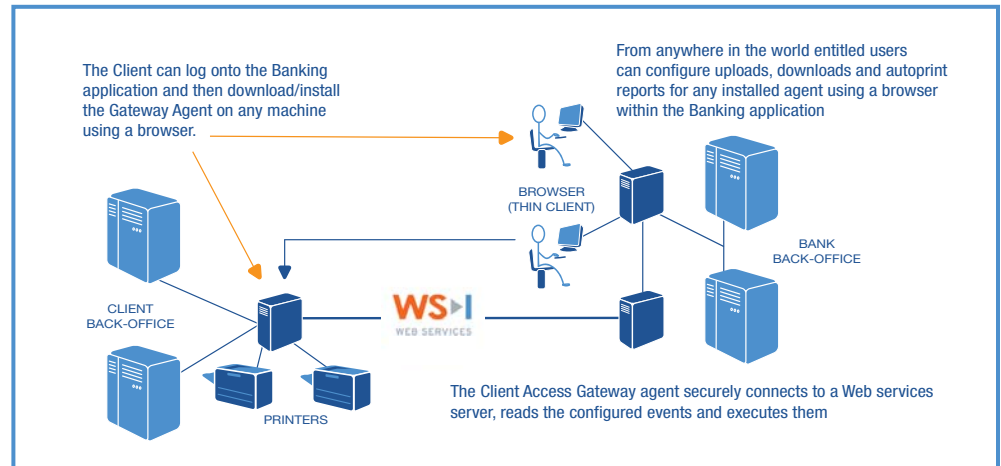
How WebSeries Client Access Gateway Works

The Gateway utilizes the latest standards of Web Services Security (WSS) protocol and is easily installed on any machine. Clients can install any number of secure agents within their network. These agents log on to the WebSeries Client Access Gateway Server using secure credentials generated by the installing user and approved by a client administrator within the electronic banking application. Once installed, users can configure events (uploads, downloads, report printing) for agents to perform.

Using secure Web services, bank information and payment transactions can be securely transmitted and authenticated over the public Internet between the bank and the corporate client without any manual intervention or action. Each agent

When selecting Bottomline Technologies, you reap the benefits of more than 20 years of experience in electronic banking. The WebSeries platform and modules integrate seamlessly with your existing payment processes and represent some of the most full-featured solutions available today.

automatically connects to the server every 60 seconds forming a "heartbeat" that is constantly monitored for continuity – creating the highest standard of mission-critical transactional communication. Email alerts can be configured to be sent when any active software agent does not register a heartbeat within 120 seconds.



WebSeries Client Access Gateway Benefits

- Provides an infrastructure for corporate clients to easily send payments to their banks and receive reporting information without any daily manual activity
- Facilitates complete straight through processing
- Provides a reliable direct, unattended, and secure transactional communication service with very low infrastructure cost
- Decreases the software and support costs for "host to host" connections in place for larger clients
- Increases overall transaction volumes and service fees without additional channel costs
- Software agent installs in minutes using a browser-based electronic banking application.

The Bottomline Advantage

WebSeries' extensible Global Cash Management platform enables financial institutions to add capabilities to their product portfolios more efficiently and cost-effectively than highly custom-engineered solutions. In addition to WebSeries Client Access Gateway, Bottomline's cash management suite features modules for ACH, real-time gross settlement (wires), international payments, global information reporting and check management. This single, open platform approach lowers the risk associated with proprietary implementations and provides a logical upgrade path for future expansion and updates.



Corporate Headquarters
 325 Corporate Drive
 Portsmouth, NH 03801 USA
tel 1.800.472.1321, +1.603.436.0700
fax +1.603.436.0300
email info@bottomline.com
www.bottomline.com

Europe, Middle East, Africa
 115 Chatham Street
 Reading, Berkshire RG17JX UK
tel +44.118.925.8250
fax +44.118.956.9990
email info@bottomline.co.uk

Asia Pacific
 206/12-14 Cato Street
 Hawthorn East, VIC, 3123 Australia
tel +61.3.9824.6888
fax +61.3.9824.6866
email ap_info@bottomlinetechnologies.com.au