



Bottomline Invoice Automation

Seamless Invoice Management
that Accelerates AP Processing

According to the Institute of Finance and Management, only 25% of accounts payable departments describe their invoice processing as being “highly automated.” AP remains challenged by a blizzard of paper and document-based invoices handled with inefficient and manual processes that introduce risk and limit speed, accuracy, and controls critical to successful payables management.

In addition, most corporate AP functions need to maintain and regularly interface with an ERP for general ledger and budget management. The ideal solution not only delivers best-in-class invoice automation but also integrates seamlessly with your ERP, resulting in unprecedented efficiencies, cost savings, and ease of use.

Leverage Your ERP Investment

Bottomline Invoice Automation enables organizations to overcome the inefficiencies of manual processing with a completely automated invoicing solution that integrates with your ERP. With Paymode, your AP department will streamline workflows, enhance governance, take advantage of available early payment discounts, and get operational visibility around PO and non-PO invoice processing.

Starting with a next generation image and data capture platform, Paymode provides a seamless solution for the receipt, storage, and processing of both expense and inventory invoices from any authorized source. Validated invoices are stored and presented for either automated PO header and line-item capture and matching, or automated non-PO general ledger coding and approval routing.

From capture through payment, invoice events and associated participants are audited for use within an actionable analytics and reporting experience, including self-service document retrieval. Bottomline Invoice Automation integrates with any ERP to minimize setup and additional points of failure combined with a high degree of data integrity, a marked contrast from competitor solutions.

Key Benefits



**Integrate Seamlessly
with Your ERP**



**Enhance Visibility
and Control**



**Eliminate Paper
Invoices and Manual
Processes**



**Maximize Straight-
Through Processing**



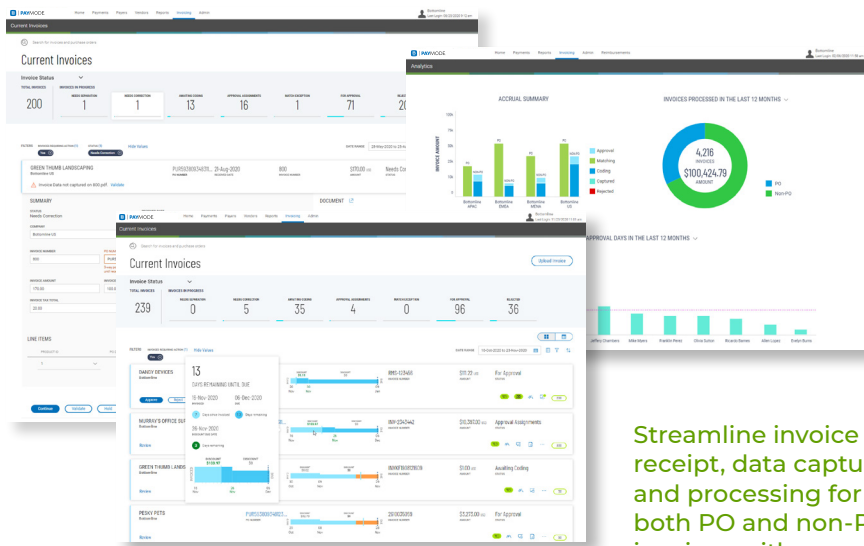
**Quicker Approvals
with Mobile Support**



**Capitalize on
Available Early
Payment Discounts**



**Reduce Costs,
Errors, and Risk**



Streamline invoice receipt, data capture, and processing for both PO and non-PO invoices with complete visibility.

Why Choose Paymode?

Partner with a global leader in business payment automation with a 30 year track record of being a trusted advisor of AP and ERP best practices. Bottomline Invoice Automation provides several differentiating capabilities that fuel efficiencies and lets you:

- Enhance classification of invoices and supporting documents and capture data elements leveraging intelligent extraction, OCR, and machine learning
- Maximize accuracy by reconciling invoices with related receipts and purchase orders using automated line capture and intelligent data matching
- Drive efficiency gains with zero-touch scenarios for both PO and non-PO invoices to drive straight-through processing
- Invoice risk scoring uses custom business rules plus supervised machine learning to help identify unusual and potentially fraudulent invoices
- Enable mobile review and approval of invoices from any device

Paymode integrates with any ERP and offers several implementation options, including automated data transmission, scheduled and on-demand synchronization using a pre-built ERP connector, or leverage published unified APIs using the developer portal. You have the opportunity to choose the implementation approach that makes the most sense for your business.

Paymode enables businesses to achieve AP automation across the entire invoice-to-pay process. Once invoices are approved, you can make electronic payments using the Paymode Integrated Payables module. Tap into an established network of more than 600,000 member businesses to achieve 100% payment automation, improve payment security, earn rebates, and streamline AP across virtual card, ACH, check, and B2C payments, all within a single process.

Learn how Paymode can help you overcome the cost, time, risk, and errors associated with paper documents and manual processes

[Get Demo](#)

Key Benefits

Captures and Stores Invoices:

- Receive and process paper and electronic invoices from any source
- Digital mailroom manages invoices and supporting documents
- Intelligent data extraction, OCR, machine learning, and real-time validation reduces manual data entry
- Invoices and supporting documents accessible within and external to ERP
- PO-flip lets your vendors seamlessly convert presented PO's into invoices
- Optional managed service for invoice receipt and data capture

Automates Workflows and Approvals:

- Integrate with any ERP using one of several implementation options
- Flexible approval workflow that is easily maintained by business users
- Automate 2-way and 3-way reconciliation with both PO header and line-item capture and matching
- Automate PO exception handling for resolution and approval
- Automate GL code entry and approval routing of non-PO invoices
- Flexible PO and non-PO approval workflows with notifications, reminders, and escalation visibility
- Mobile review and approvals

Operational Visibility:

- Audit trail of all activities, status updates, and user comments
- Interactive analytic dashboard and real-time reporting for KPI tracking
- Timely accrual reporting at both summary and detail level
- Outstanding approval dashboard to view status and insights including early payment discount tracking
- Invoice risk scoring helps identify potentially fraudulent invoices