



Transform AP for JD Edwards EnterpriseOne

Seamless Invoice Automation that Accelerates AP Processing

Key Benefits



Immersive and real-time JD Edwards integration



Enhance visibility and control



Eliminate paper invoices and manual processes



Maximize straight through processing



Quicker approvals with mobile support



Capitalize on available early payment discounts



Reduce costs, errors, and risk

According to the Institute of Finance and Management, only 25% of accounts payable departments describe their invoice processing as being “highly automated.” AP remains challenged by a blizzard of paper and document-based invoices handled with inefficient and manual processes that introduce risk and limit speed, accuracy, and controls critical to successful payables management.

In addition, most corporate AP functions need to maintain and regularly interface with an ERP for general ledger and budget management. The ideal solution not only delivers best-in-class invoice automation but also includes real-time ERP integration for an extremely immersive user experience versus siloed solutions.

Leverage Your Investment in Oracle JD Edwards

Bottomline Transform AP for JD Edwards enables organizations to overcome the inefficiencies of manual processing with a completely automated invoicing solution delivered within JD Edwards EnterpriseOne. With Transform AP, your AP department will streamline workflows, enhance governance, and get operational visibility around PO and non-PO invoice processing.

Starting with a next generation image and data capture platform, Transform AP provides a seamless solution for the receipt, storage, and processing of both expense and inventory invoices from any authorized source. Validated invoices are stored and presented for either automated PO line capture and matching, or automated non-PO general ledger coding and approval routing. Transform AP uniquely leverages the existing Oracle JD Edwards EnterpriseOne framework to evaluate rules and corporate governance, a marked contrast from competitor solutions that are built outside of the ERP.

From capture through payment, invoice events and related participants are audited for use within an actionable analytics and reporting experience, including self-service document retrieval. The entire offering is immersive and employs real-time integration, which allows AP users to work within their familiar JD Edwards screens and helps maintain a low ownership cost.

Key Capabilities



Captures and Stores Invoices

- + Receive and process paper and electronic invoices from any source
- + OCR, machine learning, and real-time validation reduces manual data entry
- + Invoices and supporting documents accessible within JDE via media attachment or externally via, web portal



Automates Workflows and Approvals:

- + Delivered within JDE to significantly extend the capabilities of your ERP
- + Immersive user experience within familiar JD Edwards environment
- + Flexible approval workflow that is easily maintained by business users
- + Automate 2-way and 3-way reconciliation with both PO header as well as line-item capture and matching
- + Automate PO exception handling for resolution and approval
- + Automate GL code entry and approval routing of non-PO invoices
- + Mobile review and approvals

Operational Visibility:



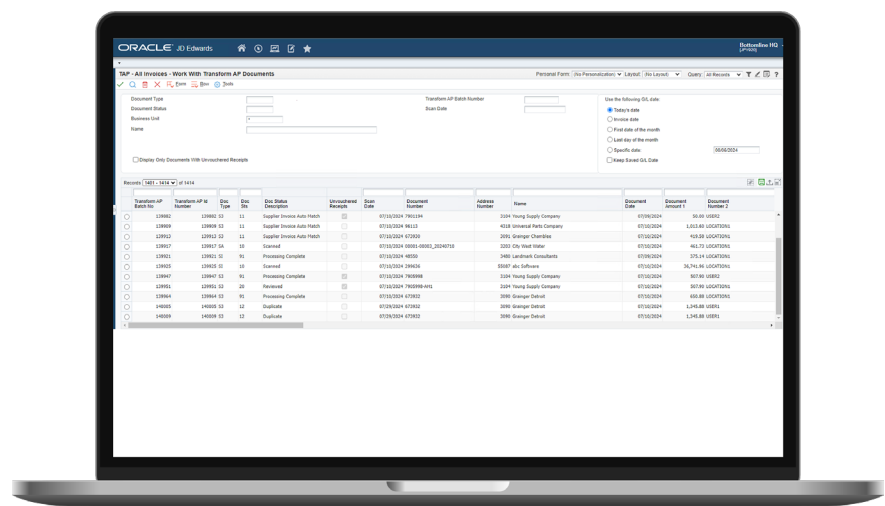
- + Audit trail of all activities, status updates, and user comments
- + Analytics and reporting provides KPI tracking to operational goals
- + Timely accrual reporting at both summary and detail level

Transform AP in Action

Transform AP streamlines the entire supplier invoice process, starting with the electronic capture of inbound paper invoices utilizing installed scanners or multifunction devices or alternative sources such as fax and email.

With Bottomline's advanced optical character recognition (OCR) technology, key invoice metadata such as invoice number, date, amount, PO number, line-item data and more are automatically captured using OCR and validated against JD Edwards EnterpriseOne. Invoices appear in familiar EnterpriseOne work queues with status indicators that help guide the worker to effectively process the items.

AP USERS WORK WITHIN
THE FAMILIAR JD EDWARDS
INTERFACE



Purchase Order Invoice Processing

Based on business rules and customer-specified configurations, PO-based invoices can be automatically matched against existing purchase orders (2-way) or goods received notices (3-way), resulting in automatic voucher creation without manual intervention. Invoices which fail to match are flagged with the appropriate status and placed in the Transform AP work queue. AP users can then open, individual invoice transactions with a convenient 'split screen' view containing the invoice image and header information for further exception processing.

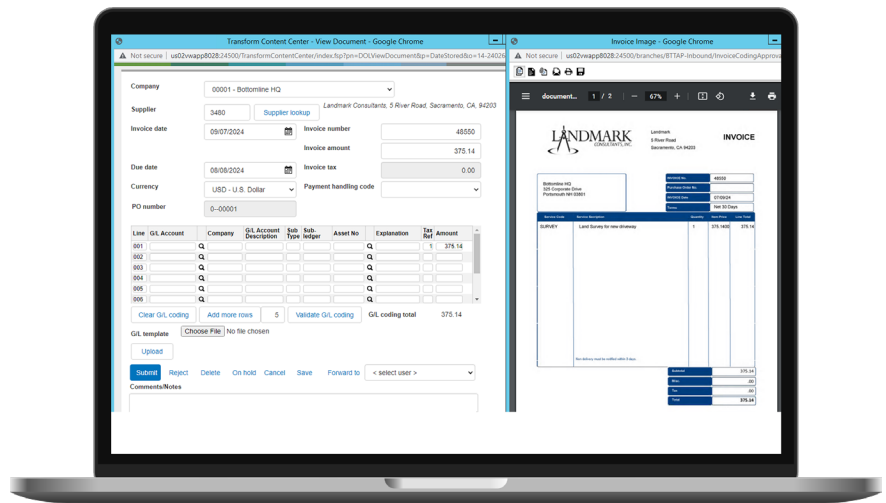
For any PO based invoice requiring secondary review and approval by a non-EnterpriseOne user within the business, a 'Forward' request is submitted, resulting in an email notification with an embedded link to the transaction within the approver's inbox.

Non-Po Invoice Processing

Non PO-based invoices can be automatically routed based on business rules or with ad-hoc forwarding to appropriate field personnel to verify header-level detail and enter G/L information. The invoices can be easily viewed with a standard Web browser, allowing authorized users to approve, add comments or reject the invoice.

All details are then validated against the EnterpriseOne Account Master table to ensure accuracy and integrity. Escalation and delegation rules as well as Out of Office support ensure that invoices are continually moving through the process in a timely manner, preventing bottlenecks in user inboxes. Once approved, customers can leverage the Transform AP Auto-Post feature to automatically create the voucher in EnterpriseOne.

NON-PO BASED INVOICES
REQUIRING EXCEPTION
PROCESSING CAN BE
VIEWED WITHIN
ENTERPRISEONE OR VIA
THE TRANSFORM AP WEB
PORTAL, FOR REVIEW,
CODING, AND APPROVAL
ACROSS THE BUSINESS.



A full history of the invoice process is visible at any stage for staff to monitor. To further support a comprehensive view of each transaction for both audit and reporting purposes, Transform AP also supports the storage of related documents as a standard feature, including POs, check copies and remittance advices, as well as ad hoc documents, such as related e-mails.

RELATED DOCUMENTS, INCLUDING PURCHASE ORDERS, CHECKS, REMITTANCE ADVICES, ARE VISIBLE WITHIN TRANSFORM AP TO SUPPORT APPROVAL WORKFLOWS AS WELL AS AUDIT AND COMPLIANCE REPORTING.



Learn how Bottomline can help you overcome the cost, time, risk, and errors associated with paper documents and manual processes

Contact Us

Why Choose Bottomline?

Partner with a global leader in business payment automation with a 30 year track record of being a trusted advisor for AP and Oracle JD Edwards best practices.

Transform AP for JD Edwards EnterpriseOne provides several differentiating capabilities that fuel efficiencies and lets you:



Integrate seamlessly with EnterpriseOne as the central location for AP and leverage EnterpriseOne business functions and rules for voucher creation



Maximize accuracy by reconciling invoices with related receipts and purchase orders using automated line capture and intelligent data matching



Drive efficiency gains with zero-touch scenarios for both PO and non-PO invoices to drive straight-through processing



Get a real-time pulse of operational status and identify process improvement opportunities



Enable mobile review and approval of invoices from any device



About Bottomline

Bottomline helps businesses transform the way they pay and get paid. A global leader in business payments and cash management, Bottomline's secure, comprehensive solutions modernize payments for businesses and financial institutions globally. With over 35 years of experience, moving more than \$16 trillion in payments annually, Bottomline is committed to driving impactful results for customers by reimagining business payments and delivering solutions that add to the bottom line. Bottomline is a portfolio company of Thoma Bravo, one of the largest software private equity firms in the world, with more than \$179 billion in assets under management.

For more information, visit www.bottomline.com

© Copyright 2015 - 2025 Bottomline Technologies, Inc. All rights reserved.

Bottomline, Paymode, and the Bottomline logo are trademarks or registered trademarks of Bottomline Technologies, Inc. All other trademarks, brand names or logos are the property of their respective owners.

REV UK063025LD

Corporate Headquarters
100 International Drive, Suite 200
Portsmouth, NH 03801
United States of America

Phone: +1-603-436-0700
Toll-free: +1-800-243-2528
info@bottomline.com

Europe, Middle East, Africa Headquarters
1600 Arlington Business Park
Theale, Reading, Berkshire RG7 4SA
United Kingdom

Tel (Local): 0870-081-8250
Tel (Int): +44-118-925-8250
emea-info@bottomline.com